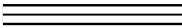
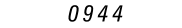
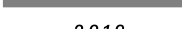
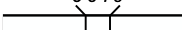

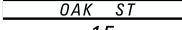
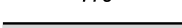
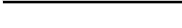
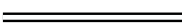







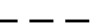


# APPENDIX A

## MAPPING

**LEGEND**

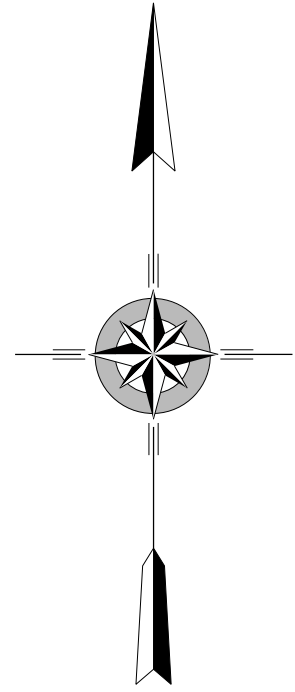
-  LIMITED ACCESS HIGHWAY
-  STATE ROUTE AND NUMBER
-  STATE MAINTAINED BRIDGE ON BOROUGH STREET
-  BOROUGH STREET NAME AND SEGMENT LENGTH IN MILES
-  TURNBACK BOROUGH STREET
-  BOROUGH ALLEY
-  OTHER ROAD
-  RAILROAD
-  STATE BOUNDARY
-  COUNTY BOUNDARY
-  TOWNSHIP BOUNDARY
-  CITY BOUNDARY
-  BOROUGH BOUNDARY
-  MUNICIPAL BUILDING
-  SPLIT MILEAGE BETWEEN MUNICIPALITIES
-  SCHOOL, COLLEGE OR UNIVERSITY
-  POINT OF INTEREST

TOTAL MILES	
Borough Road System	16.63
State Highway System	3.17
Total	19.80

POPULATION 7,833  
(2010 Census)

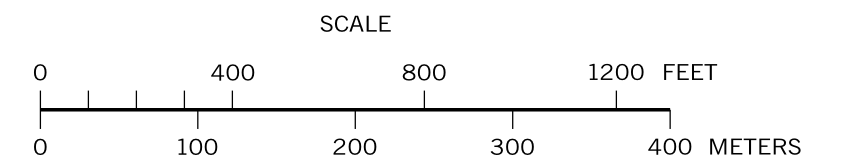


- APPLE ST
- ASH ST
- CHERRY ST
- COLWELL LA
- CORSON ST
- EIGHTH AV
- ELEVENTH AV
- ELM ST
- FIFTH AV
- FIRST AV
- FORREST ST
- FOURTH AV
- FREEDLEY ST
- HALLOWELL ST
- HARRY ST
- HECTOR ST
- JONES ST
- MAPLE ST
- MARBLE ST
- NINTH AV
- OAK ST
- OLD ELM ST
- POPLAR ST
- RIGHTER ST
- SECOND AV
- SEVENTH AV
- SIXTH AV
- SPRING MILL AV
- SUTCLIFFE LA
- TENTH AV
- THIRD AV
- TWELFTH AV
- WALNUT ST
- WASHINGTON ST
- WELLS ST
- WOOD ST



**CONSHOHOCKEN BOROUGH**  
MONTGOMERY COUNTY

PREPARED BY THE  
PENNSYLVANIA DEPARTMENT OF TRANSPORTATION  
BUREAU OF PLANNING AND RESEARCH  
GEOGRAPHIC INFORMATION DIVISION  
IN COOPERATION WITH THE  
U.S. DEPARTMENT OF TRANSPORTATION  
FEDERAL HIGHWAY ADMINISTRATION  
AND  
MUNICIPAL SERVICES DISTRICT 6-0  
MUNICIPAL CODE 46 405  
REVISED PER FORM 990 DATED 6-10-98







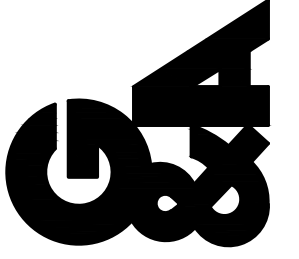
**LEGEND**

- YEAR 1.0 - 2.0
- YEAR 2.5 - 4.0
- YEAR 4.5 - 5.0
- YEAR 0 - NO TREATMENT

**GILMORE & ASSOCIATES, INC.**  
 ENGINEERING & CONSULTING SERVICES

CORPORATE HEADQUARTERS  
 65 EAST BUTLER AVENUE, SUITE 100, NEW BRITAIN, PA 18901 • (215) 345-4330 • www.gilmore-assoc.com

ONLY THOSE PLANS INCORPORATING THE PROFESSIONAL SEAL SHOULD BE CONSIDERED OFFICIAL AND RELIED UPON BY USER. THIS PLAN IS PREPARED SPECIFICALLY FOR THE CLIENT AND PROJECT DESIGNATED HEREON. MODIFICATION, REVISION, DUPLICATION OR USE WITHOUT THE CONSENT OF GILMORE & ASSOCIATES, INC. IS PROHIBITED.  
 ©COPYRIGHT 2017 GILMORE & ASSOCIATES, INC. ALL RIGHTS RESERVED



JOB NO.: 2017-10032  
 TAX MAP PARCEL NO.: N/A  
 MUNICIPAL FILE NO.: 2017-10032

DESIGNED BY: KMM  
 DRAWN BY: EVH  
 CHECKED BY: KMM

OWNER: BOROUGH OF CONSHOHOCKEN  
 400 FAYETTE STREET  
 SUITE 200  
 CONSHOHOCKEN, PA 19428

TOTAL AREA: N/A  
 TOTAL LOTS: N/A  
 DATE: 09/28/2018  
 SCALE: NOT TO SCALE

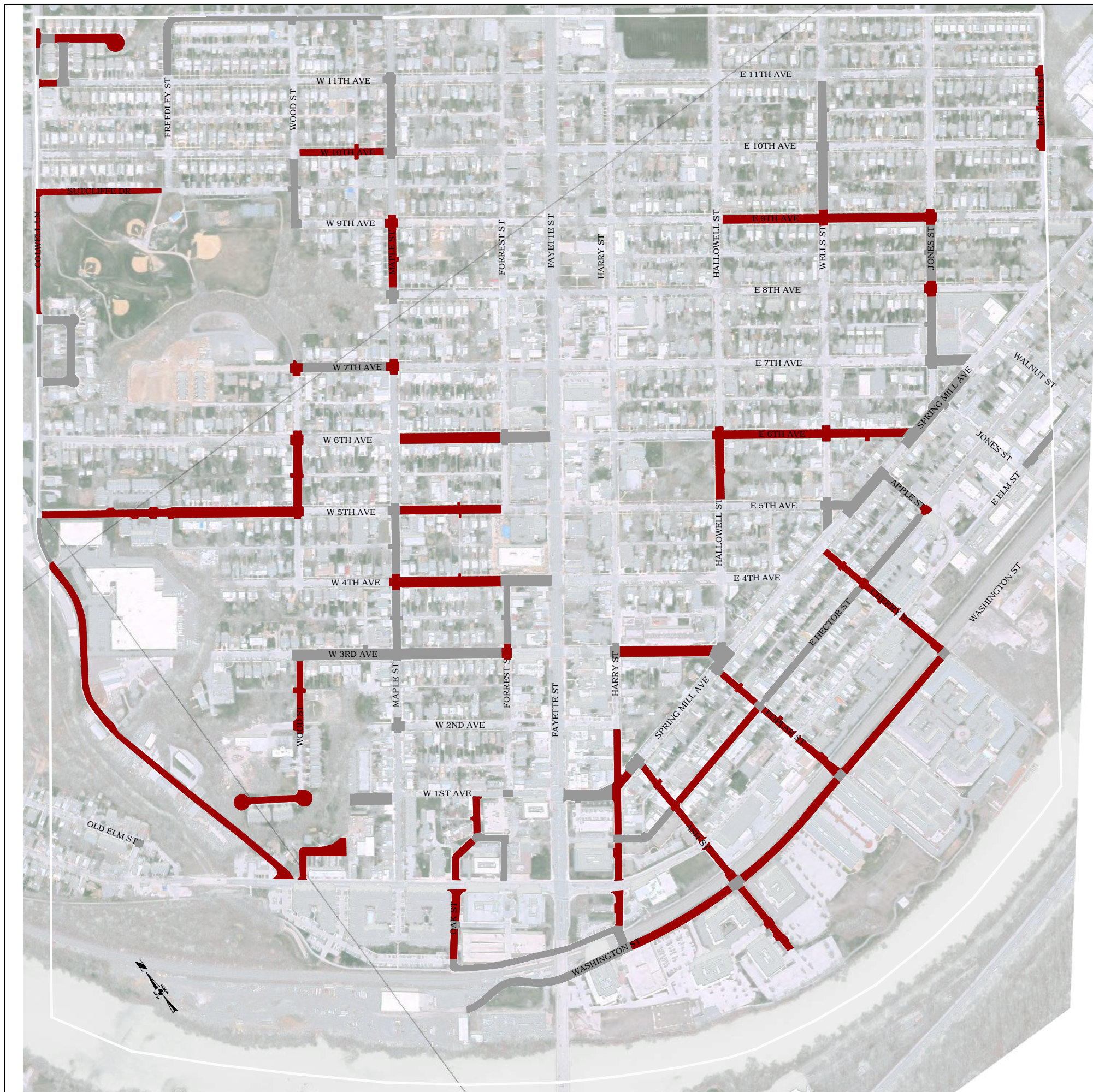
APPENDIX A  
 REPAIR YEAR RATING  
**INFRASTRUCTURE  
 MANAGEMENT PLAN**

CONSHOHOCKEN BOROUGH, MONTGOMERY COUNTY, PENNSYLVANIA

SHEET NO.:


REV.	DESCRIPTION	DATE	BY



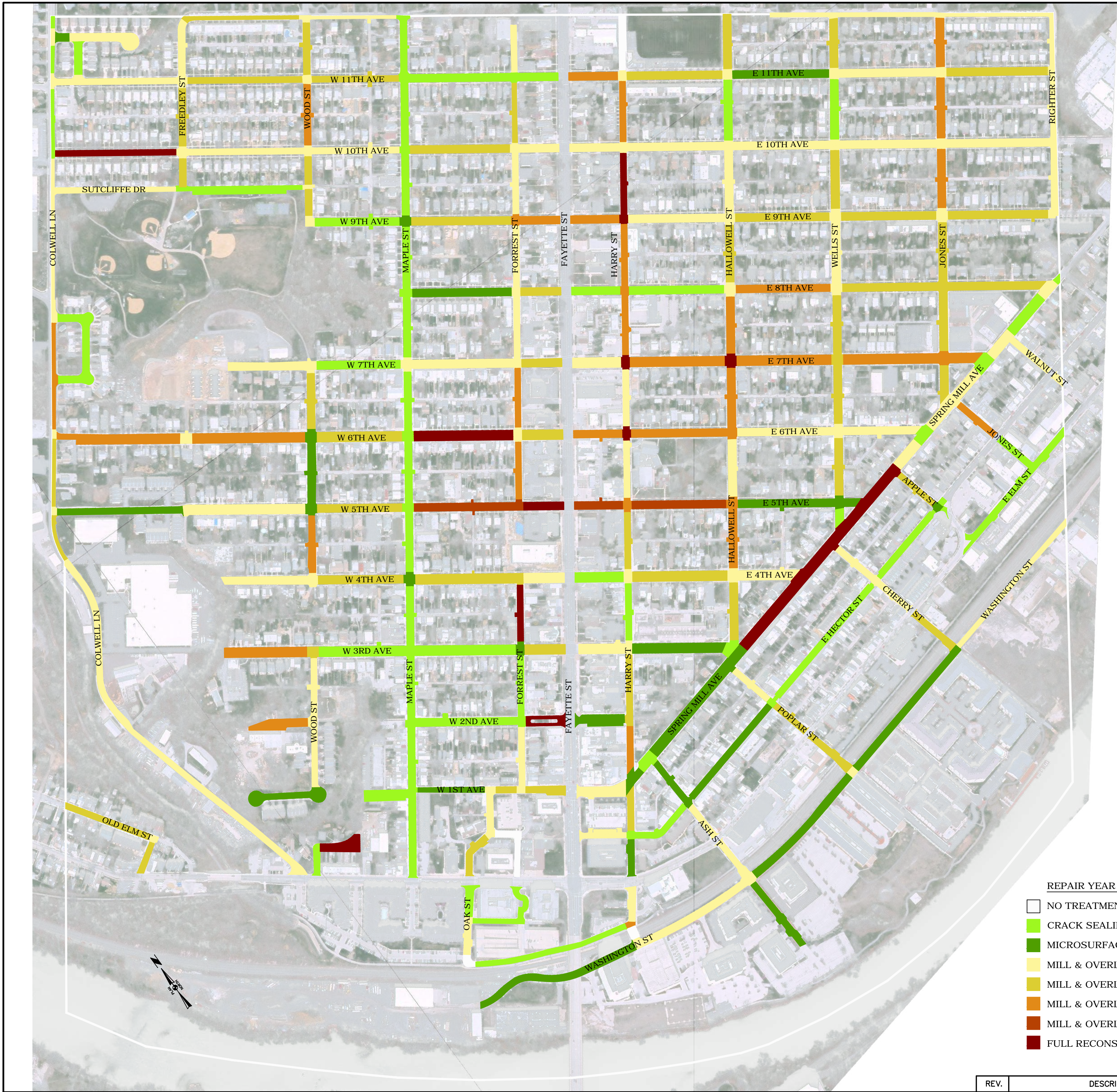


**LEGEND**

- PROPOSED STORM SEWER REPLACEMENT BASED ON TELEVISIONING RESULTS
- EXISTING STORM SEWER SYSTEM

<p>APPENDIX A</p> <p><b>STORM SEWER TELEVISIONING RESULTS</b></p> <p><b>INFRASTRUCTURE MANAGEMENT PLAN</b></p> <p>CONSHOHOCKEN BOROUGH, MONTGOMERY COUNTY, PENNSYLVANIA</p>			<p><b>GILMORE &amp; ASSOCIATES, INC.</b> ENGINEERING &amp; CONSULTING SERVICES</p> <p><small>CORPORATE HEADQUARTERS 66 EAST BUTLER AVENUE, SUITE 900, NEW BRITAIN, PA 18901 • (215) 346-4339 • www.gilmoreassoc.com</small></p>
<p>OWNER: BOROUGH OF CONSHOHOCKEN 400 FAYETTE STREET SUITE 200 CONSHOHOCKEN, PA 19428</p>	<p>JOB NO.: 2017-10032 MUNICIPAL FILE NO.: 2017-10032</p>	<p>TAX MAP PARCEL NO.: N/A</p>	<p>ONLY THOSE PLANS INCORPORATING THE PROFESSIONAL SEAL SHOULD BE CONSIDERED OFFICIAL AND RELIED UPON BY USER. THIS PLAN IS BEING PROVIDED FOR INFORMATION ONLY. NO PART OF THIS PLAN IS TO BE REPRODUCED, COPIED, REPRODUCED, REVISION, DUPLICATION OR USE WITHOUT THE WRITTEN CONSENT OF GILMORE &amp; ASSOCIATES, INC. IS PROHIBITED. THE ©COPYRIGHT 2017 GILMORE &amp; ASSOCIATES, INC. ALL RIGHTS RESERVED</p>
<p>TOTAL AREA: N/A</p> <p>DATE: 09/28/2018</p>	<p>TOTAL LOTS: N/A</p> <p>SCALE: NOT TO SCALE</p>	<p>DESIGNED BY: KMM</p> <p>DRAWN BY: EVH</p> <p>CHECKED BY: KMM</p>	
<p>SHEET NO.:</p>			
REV.	DESCRIPTION	DATE	BY



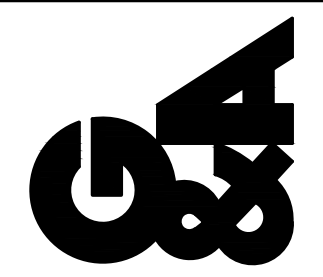


**REPAIR YEAR LEGEND**

White	NO TREATMENT
Light Green	CRACK SEALING
Dark Green	MICROSURFACING
Yellow	MILL & OVERLAY
Light Orange	MILL & OVERLAY-MINOR BASE REPAIR
Orange	MILL & OVERLAY-MODERATE BASE REPAIR
Dark Orange	MILL & OVERLAY-MAJOR BASE REPAIR
Red	FULL RECONSTRUCTION

**GILMORE & ASSOCIATES, INC.**  
**ENGINEERING & CONSULTING SERVICES**  
 CORPORATE HEADQUARTERS  
 65 EAST BUTLER AVENUE, SUITE 100, NEW BRITAIN, PA 18901 • (215) 345-4330 • www.gilmore-assoc.com

ONLY THOSE PLANS INCORPORATING THE PROFESSIONAL SEAL SHOULD BE CONSIDERED OFFICIAL AND RELIED UPON BY USER. THIS PLAN IS PREPARED SPECIFICALLY FOR THE CLIENT AND PROJECT DESIGNATED HEREON. MODIFICATION, REVISION, DUPLICATION OR USE WITHOUT THE CONSENT OF GILMORE & ASSOCIATES, INC. IS PROHIBITED.  
 ©COPYRIGHT 2017 GILMORE & ASSOCIATES, INC. ALL RIGHTS RESERVED



<b>JOB NO.:</b> 2017-10032	<b>TAX MAP PARCEL NO.:</b> N/A
<b>MUNICIPAL FILE NO.:</b> 2017-10032	<b>CHECKED BY:</b> KMM
<b>DESIGNED BY:</b> KMM	<b>DRAWN BY:</b> EVH
<b>SCALE:</b> NOT TO SCALE	<b>DATE:</b> 09/28/2018

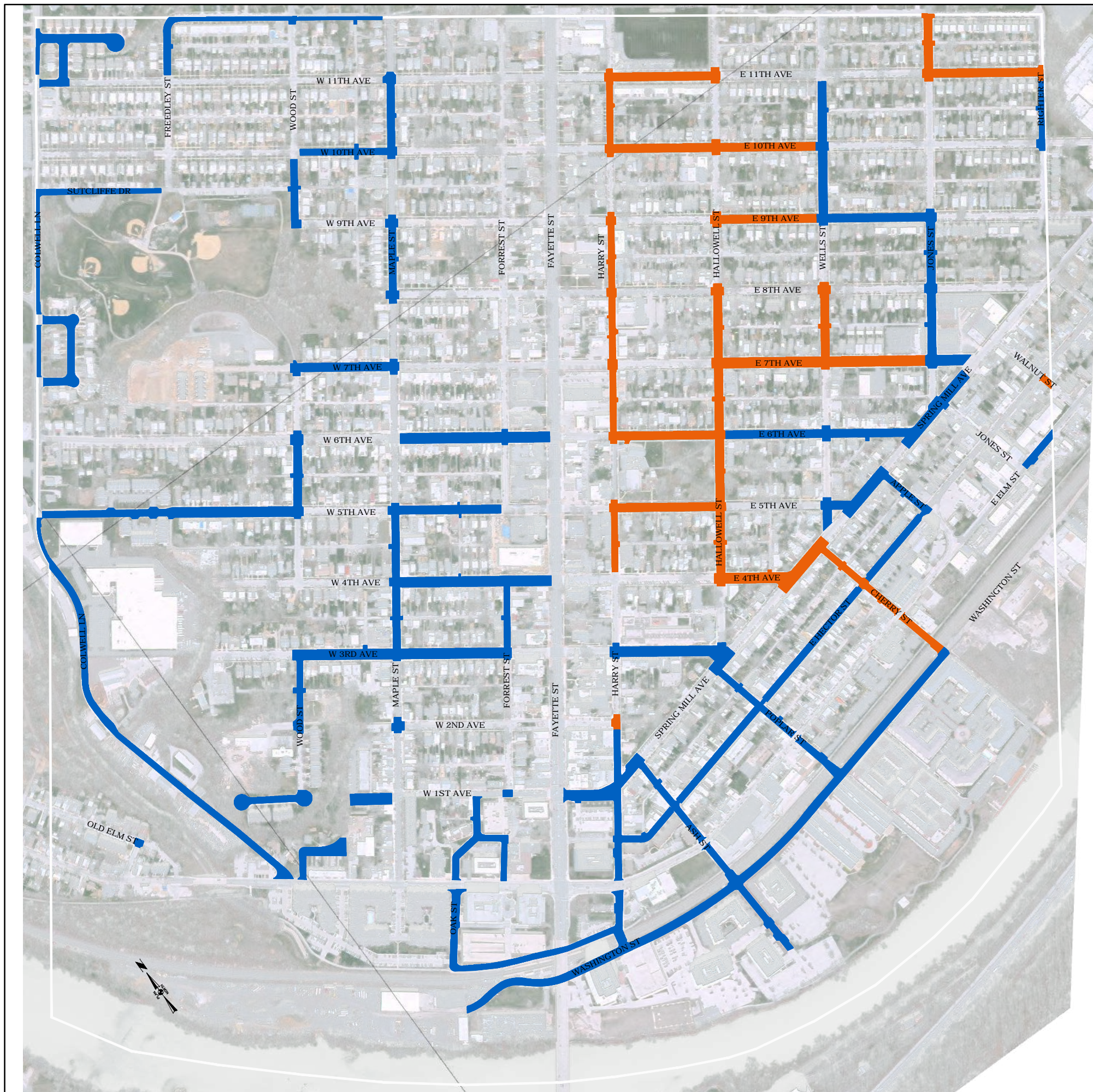
<b>OWNER:</b> BOROUGH OF CONSHOHOCKEN 400 FAYETTE STREET SUITE 200 CONSHOHOCKEN, PA 19428	<b>TOTAL LOTS:</b> N/A
<b>TOTAL AREA:</b> N/A	<b>SCALE:</b> NOT TO SCALE

APPENDIX A  
**RECOMMENDED PAVEMENT  
 REPAIR TREATMENT  
 INFRASTRUCTURE  
 MANAGEMENT PLAN**  
 CONSHOHOCKEN BOROUGH, MONTGOMERY COUNTY, PENNSYLVANIA

<b>SHEET NO.:</b>
-------------------

REV.	DESCRIPTION	DATE	BY

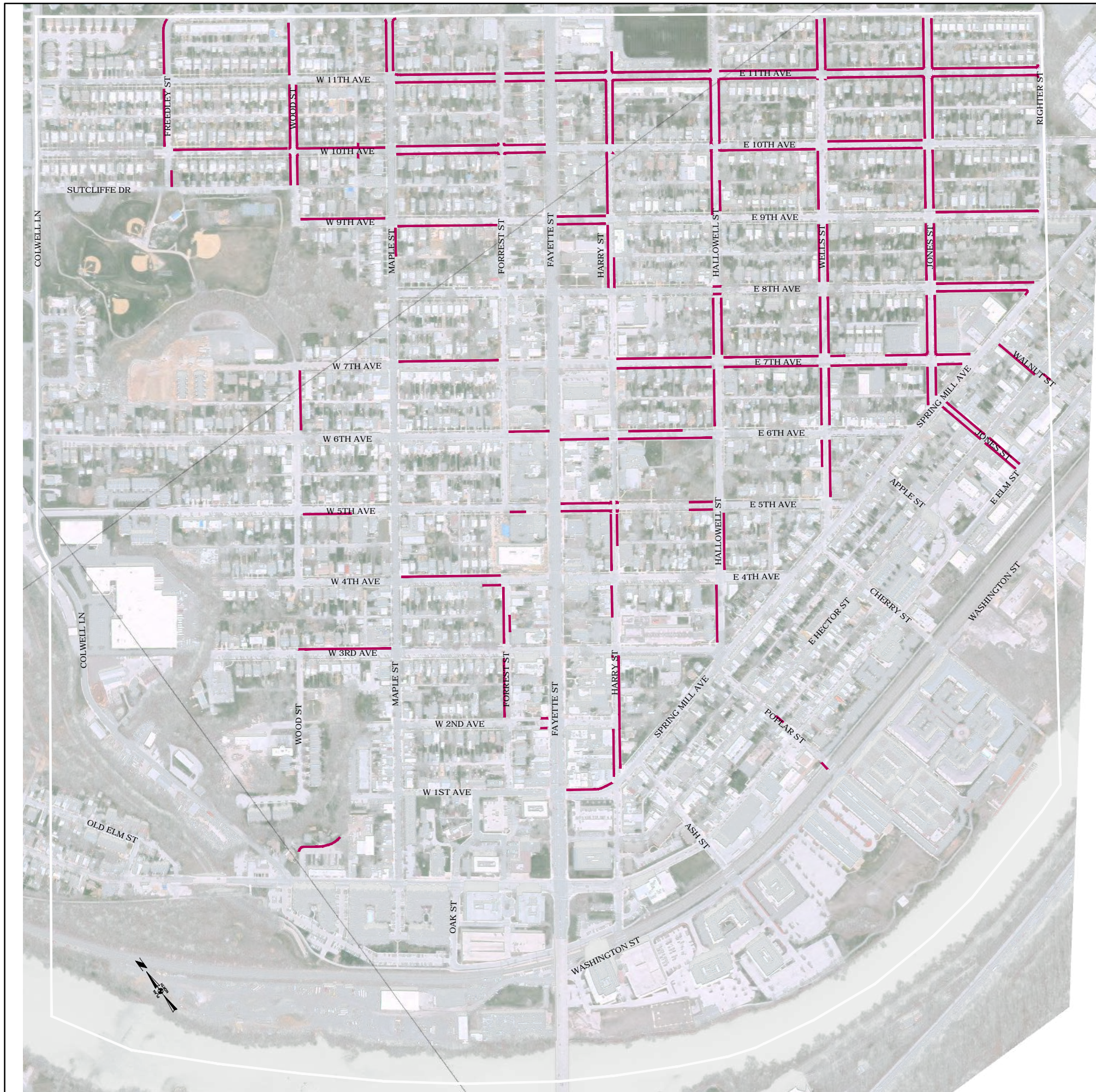




- LEGEND**
- PROPOSED STORM SEWER PROJECT
  - EXISTING STORM SEWER SYSTEM

<p><b>APPENDIX A</b></p> <p><b>EXISTING &amp; PROPOSED STORM SEWER LOCATIONS</b></p> <p><b>INFRASTRUCTURE MANAGEMENT PLAN</b></p> <p style="font-size: small;">CONSHOHOCKEN BOROUGH, MONTGOMERY COUNTY, PENNSYLVANIA</p>			<p><b>GILMORE &amp; ASSOCIATES, INC.</b> ENGINEERING &amp; CONSULTING SERVICES CORPORATE HEADQUARTERS 66 EAST BUTLER AVENUE, SUITE 900, NEW BRITAIN, PA 18901 • (215) 346-4330 • www.gilmoreassoc.com</p> <p>ONLY THOSE PLANS INCORPORATING THE PROFESSIONAL SEAL SHOULD BE CONSIDERED OFFICIAL AND RELIED UPON BY USER. THIS PLAN IS BEING PROVIDED FOR INFORMATION ONLY. NO PART OF THIS PLAN IS TO BE REPRODUCED, COPIED, REPRODUCED, REVISION, DUPLICATION OR USE WITHOUT THE WRITTEN CONSENT OF GILMORE &amp; ASSOCIATES, INC. IS PROHIBITED. THE COPYRIGHT © 2017 GILMORE &amp; ASSOCIATES, INC. ALL RIGHTS RESERVED.</p>								
<p><b>OWNER:</b> BOROUGH OF CONSHOHOCKEN 400 FAYETTE STREET SUITE 200 CONSHOHOCKEN, PA 19428</p>	<p><b>JOB NO.:</b> 2017-10032</p> <p><b>MUNICIPAL FILE NO.:</b> 2017-10032</p>	<p><b>TAX MAP PARCEL NO.:</b> N/A</p>	<p><b>DESIGNED BY:</b> KMM</p> <p><b>DRAWN BY:</b> EVH</p> <p><b>CHECKED BY:</b> KMM</p>								
<p><b>TOTAL AREA:</b> N/A</p> <p><b>DATE:</b> 09/28/2018</p>	<p><b>TOTAL LOTS:</b> N/A</p> <p><b>SCALE:</b> NOT TO SCALE</p>	<p><b>N.T.S.</b></p>	<p><b>SCALE:</b> NOT TO SCALE</p>								
<p><b>SHEET NO.:</b></p>											
<table border="1" style="width: 100%; border-collapse: collapse;"> <thead> <tr> <th style="width: 10%;">REV.</th> <th style="width: 70%;">DESCRIPTION</th> <th style="width: 10%;">DATE</th> <th style="width: 10%;">BY</th> </tr> </thead> <tbody> <tr> <td> </td> <td> </td> <td> </td> <td> </td> </tr> </tbody> </table>	REV.	DESCRIPTION	DATE	BY							
REV.	DESCRIPTION	DATE	BY								





**LEGEND**

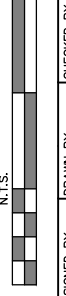

APPROXIMATE LOCATIONS OF VISUALLY IDENTIFIED GUTTER CURB

REV.	DESCRIPTION	DATE	BY

APPENDIX A  
**PROPOSED GUTTER CURB REPLACEMENT LOCATIONS  
 INFRASTRUCTURE MANAGEMENT PLAN**

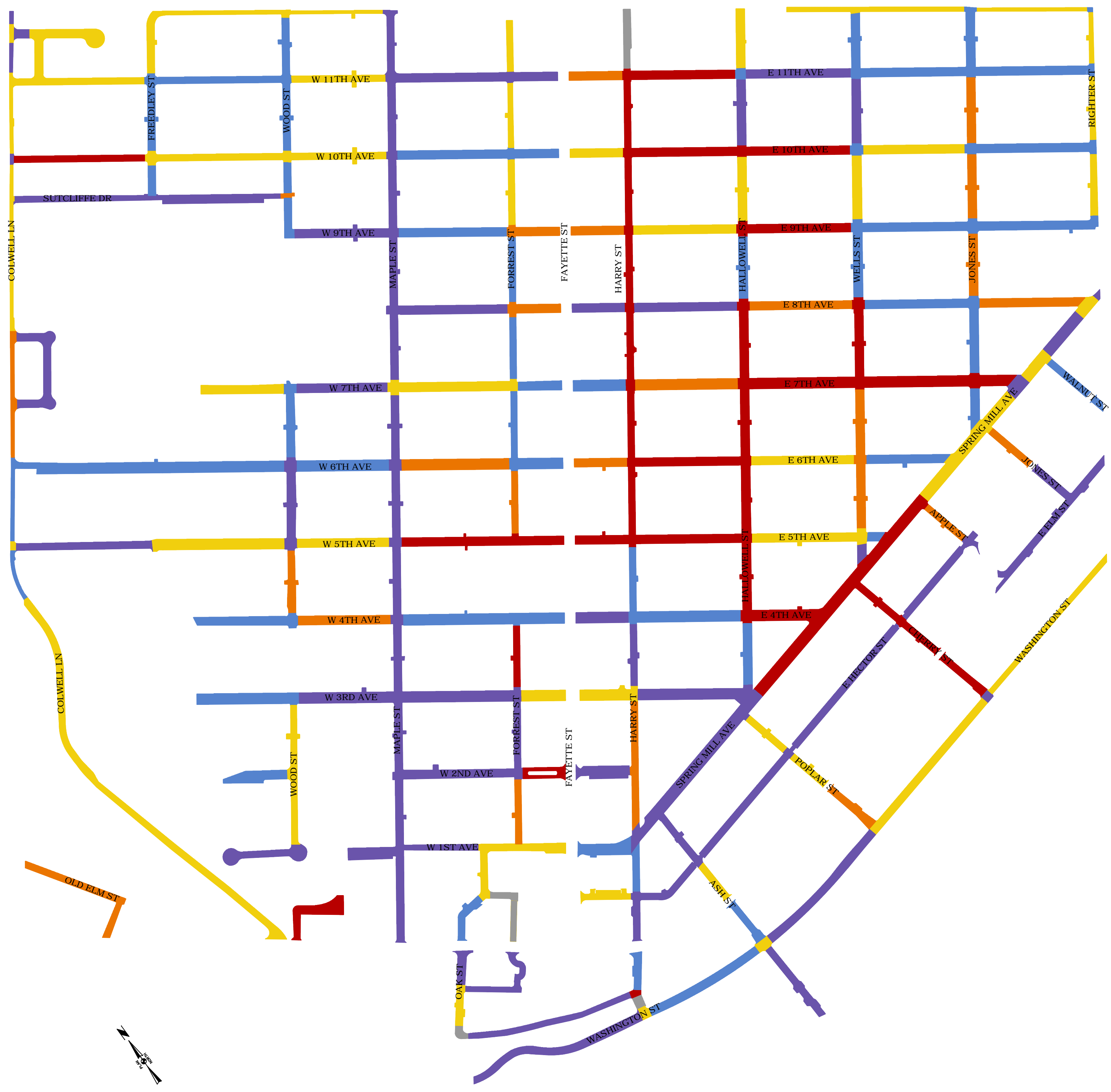
CONSHOHOCKEN BOROUGH, MONTGOMERY COUNTY, PENNSYLVANIA

SHEET NO.:

<b>OWNER:</b> BOROUGH OF CONSHOHOCKEN 400 FAYETTE STREET SUITE 200 CONSHOHOCKEN, PA 19428	<b>JOB NO.:</b> 2017-10032	<b>TAX MAP PARCEL NO.:</b> N/A	<b>MUNICIPAL FILE NO.:</b> 2017-10032
<b>TOTAL AREA:</b> N/A	<b>TOTAL LOTS:</b> N/A	<b>SCALE:</b> NOT TO SCALE	<b>DATE:</b> 09/28/2018
		<b>DRAWN BY:</b> EVB	<b>CHECKED BY:</b> KMM
		<b>GILMORE &amp; ASSOCIATES, INC.</b> ENGINEERING & CONSULTING SERVICES <small>CORPORATE HEADQUARTERS        66 EAST BUTLER AVENUE, SUITE 900, NEW BRITAIN, PA 18901 • (215) 346-4330 • www.gilmoreassoc.com</small>	

ONLY THOSE PLANS INCORPORATING THE PROFESSIONAL SEAL SHOULD BE CONSIDERED OFFICIAL AND RELIED UPON BY USER. THIS PLAN IS THE PROPERTY OF GILMORE & ASSOCIATES, INC. NO PART OF THIS HEREON, MODIFICATION, REVISION, DUPLICATION OR USE WITHOUT THE WRITTEN CONSENT OF GILMORE & ASSOCIATES, INC. IS PROHIBITED. ©COPYRIGHT 2017 GILMORE & ASSOCIATES, INC. ALL RIGHTS RESERVED.



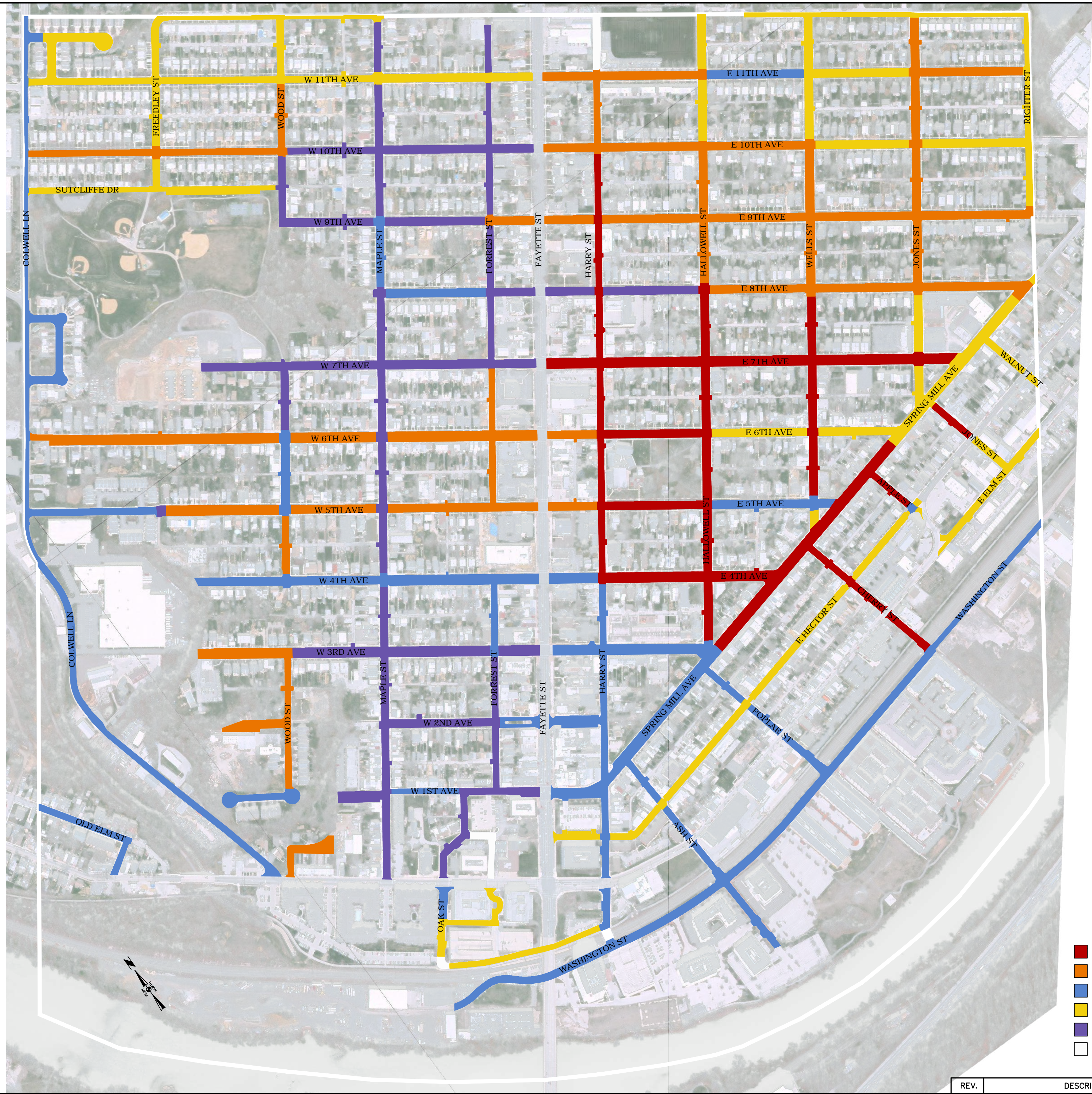


- TREATMENT YEAR LEGEND
- YEAR 1
  - YEAR 2
  - YEAR 3
  - YEAR 4
  - YEAR 5
  - YEAR 0 - NO TREATMENT

REV.	DESCRIPTION	DATE	BY

<b>APPENDIX A</b> <b>WORST FIRST IMPLEMENTATION</b> <b>SCENARIO</b> <b>INFRASTRUCTURE</b> <b>MANAGEMENT PLAN</b>		CONSHOHOCKEN BOROUGH, MONTGOMERY COUNTY, PENNSYLVANIA	
OWNER: BOROUGH OF CONSHOHOCKEN 400 FAYETTE STREET SUITE 200 CONSHOHOCKEN, PA 19428		TOTAL AREA: N/A DATE: 09/28/2018	
TOTAL LOTS: N/A		SCALE: NOT TO SCALE	
JOB NO: 2017-10032	TAX MAP PARCEL NO: N/A	MUNICIPAL FILE NO.: 2017-10032	CHECKED BY: KMM
DESIGNED BY: KMM		DRAWN BY: EVH	N.T.S.
<b>GILMORE &amp; ASSOCIATES, INC.</b> <b>ENGINEERING &amp; CONSULTING SERVICES</b>			
CORPORATE HEADQUARTERS 65 EAST BUTLER AVENUE, SUITE 100, NEW BRITAIN, PA 18901 • (215) 345-4330 • www.gilmore-assoc.com			
ONLY THOSE PLANS INCORPORATING THE PROFESSIONAL SEAL SHOULD BE CONSIDERED OFFICIAL AND RELIED UPON BY USER. THIS PLAN IS PREPARED SPECIFICALLY FOR THE CLIENT AND PROJECT DESIGNATED HEREON. MODIFICATION, REVISION, DUPLICATION OR USE WITHOUT THE CONSENT OF GILMORE & ASSOCIATES, INC. IS PROHIBITED. ©COPYRIGHT 2017 GILMORE & ASSOCIATES, INC. ALL RIGHTS RESERVED.			
SHEET NO.:			



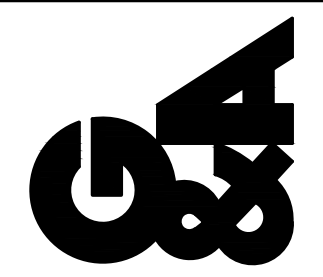


TREATMENT YEAR LEGEND

- YEAR 1
- YEAR 2
- YEAR 3
- YEAR 4
- YEAR 5
- YEAR 0 - NO TREATMENT

**GILMORE & ASSOCIATES, INC.**  
 ENGINEERING & CONSULTING SERVICES  
 CORPORATE HEADQUARTERS  
 65 EAST BUTLER AVENUE, SUITE 100, NEW BRITAIN, PA 18901 • (215) 345-4330 • www.gilmore-assoc.com

ONLY THOSE PLANS INCORPORATING THE PROFESSIONAL SEAL SHOULD BE CONSIDERED OFFICIAL AND RELIED UPON BY USER. THIS PLAN IS PREPARED SPECIFICALLY FOR THE CLIENT AND PROJECT DESIGNATED HEREON. MODIFICATION, REVISION, DUPLICATION OR USE WITHOUT THE CONSENT OF GILMORE & ASSOCIATES, INC. IS PROHIBITED.  
 ©COPYRIGHT 2017 GILMORE & ASSOCIATES, INC. ALL RIGHTS RESERVED



JOB NO:	2017-10032	TAX MAP PARCEL NO:	N/A
MUNICIPAL FILE NO.:	2017-10032	DESIGNED BY:	KMM
	N.T.S.	DRAWN BY:	EVH
		CHECKED BY:	KMM

OWNER:	BOROUGH OF CONSHOHOCKEN 400 FAYETTE STREET SUITE 200 CONSHOHOCKEN, PA 19428	TOTAL LOTS:	N/A
		SCALE:	NOT TO SCALE
		DATE:	09/28/2018

APPENDIX A  
 EFFICIENCIES IMPLEMENTATION  
 SCENARIO  
**INFRASTRUCTURE  
 MANAGEMENT PLAN**  
 CONSHOHOCKEN BOROUGH, MONTGOMERY COUNTY, PENNSYLVANIA

SHEET NO.:

REV.	DESCRIPTION	DATE	BY