

Borough of CONSHOHOCKEN Newsletter

Fall/Winter 2018



INSIDE THIS ISSUE

Mary Wood Park Renovation.....	3	Fire & Emergency Services	8
Borough Council.....	4	Community Development.....	10
Your Elected Officials.....	4	Engineering	11
Mayor Yaniv Aronson	5	Public Services.....	12
Police Department	7	Recreation Services	17

Borough Office: 400 Fayette Street, Suite 200, Conshohocken, Pennsylvania

VISIT US AT CONSHOHOCKENPA.GOV



**Interior Repair &
Painting Company**

484-483-3468

patchandpaintpros.com



WELCOME TO THE
GREAT AMERICAN PUB, CONSHOHOCKEN!

Hang out with us 7 days a week in Conshohocken!
Join us for our live music, sportscasts, happy
hours, lunches and dinners. Book a
private party or special event in any one of
our rooms including The Valley Top Ballroom!

123 Fayette Street | Conshohocken, PA 19428
(610) 940-0540

THEGREATAMERICANPUB.COM

William A. Moore Funeral Home

Affordable Funeral
Cremation and
Pre-planning Options



708 Fayette Street
Conshohocken, PA 19428
610-828-4006
www.moorefuneralhome.net



Elizabeth V. Moore "Betty" (1916-2003)
Robert W. Moore, FD
Adam R. Moore, FD

Dominic A. Coccia, Jr.

Certified Public Accountant

619 Maple Street
Conshohocken, PA 19428

dom619@aol.com | Office: 610-825-1617
Fax: 610-825-8644

D.E. DUFFEY & SONS, INC.

HEATING COOLING FUEL OIL
Sales, Service, Installations & Gas Heating

(610) 940-1400

(610) 940-1404

Learn more, or order online at:

DEDuffey.com

P.O. Box 763, 1982 Butler Pike, Plymouth Meeting, PA 19462



Keeping the Main Line green for over 40 years

At Arader Tree Service, we have been building and
enhancing our reputation as the professional experts
in tree care and landscaping throughout Montgomery,
Delaware and Chester Counties

Give us a call at 610.277.8733
10 Balligomingo Road | Suite 2A
Conshohocken, PA 19428

MARY WOOD PARK RENOVATION

After months of anticipation, the Borough of Conshohocken along with the Public Services and Recreation Services Departments are pleased to announce the completion of the Mary Wood Park project! With the installation of new equipment and safety surface, the new playground provides a safe and much needed outdoor space for our residents and their families.

Our Public Services crew worked tirelessly since February building the new playground. The crew started by demolishing and removing all of the old playground equipment and storage shed. They dug out the infrastructure and installed proper drainage for the playground safety surface. Once the playground equipment and safety surface were installed they laid new grass and mulch, built the pavilion, and installed a new fence and sidewalk on Hallowell Street. Many thanks to the Department of Public Services for their hard work in restoring the park and playground area, and making it a safe and enjoyable environment for residents and visitors.

Features of Mary Wood Park include a pavilion available for rentals, 6-23 months play area, 2-5 year old play area, 5-12 year old play area, a 75 foot zip line, and ADA components such as the freedom swing seat, dynamic surfer, and "volta" merry go round. This playground has something for children of all ages! To reserve the pavilion, please contact the Recreation Services Department by calling 610-828-3266 or emailing RecServices@conshohockenpa.gov. The park is open for play!



St. Clair CPA Solutions
Accounting for Life | Advising for Lifecycles™

**Serving businesses and individuals
in 40+ industries since 1986.**

- Accounting & Auditing
- Tax Services
- Business Strategies
- Estate & Retirement Planning
- Employee Benefits

101 West Elm Street, Suite 500, Conshohocken, PA 19428
(610) 862-1998 | cpasolutions.net

Borough Of Conshohocken Council Members



WARD 7

Colleen Leonard, President

610-322-0386
cleonard@conshohockenpa.gov

Voting Location:

Fieldhouse/ "A" Field
East 11th Avenue & Harry Street



WARD 5

Jane Flanagan, Vice President

610-828-1092 x135
jflanagan@conshohockenpa.gov

Voting Location:

Conshohocken Fire Company, #2
819 Fayette Street



WARD 1

Karen Tutino, Member

484-368-3658
ktutino@conshohockenpa.gov

Voting Location:

Marshall Lee Towers
1 West 3rd Avenue



WARD 2

James Griffin, Member

610-828-4638
jgriffin@conshohockenpa.gov

Voting Location:

Community Center at the Fel
515 Harry Street



WARD 3

Tina Sokolowski, Member

610-828-1092 ext.133
tsokolowski@conshohockenpa.gov

Voting Location:

Community Center at the Fel
515 Harry Street



WARD 4

Anita Barton, Member

610-397-1581
abarton@conshohockenpa.gov

Voting Location:

United Methodist Church
20 West 6th Avenue



WARD 6

Robert Stokley, Senior Member

610-636-7230
rstokley@conshohockenpa.gov

Voting Location:

Borough Hall
400 Fayette Street

U.S., PA & Montgomery County Elected Official



Senator Robert Casey

2000 Market Street, Suite 610
Philadelphia, PA 19103
215-405-9660
www.casey.senate.gov



Senator Patrick J. Toomey, Jr

8 Penn Center
1628 John F. Kennedy Blvd., Suite 1702
Philadelphia, PA 19103
215-241-1095 • www.toomey.senate.gov



Congressman Brendan Boyle

115 E. Glenside Ave., Suite 1
Glenside, PA 19038
215-517-6572
www.boyle.house.gov/contact



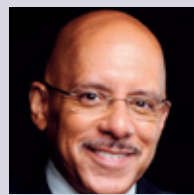
Governor Tom Wolf

225 Main Capitol Building
Harrisburg, PA 17120
1-800-932-0784
www.governor.state.pa.us



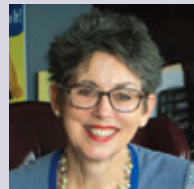
Lieutenant Governor Mike Stack

508 Main Capitol Building
Harrisburg, PA 17120
717-787-2500
www.portal.state.pa.us



State Senator Vincent Hughes

400 Fayette St., Conshohocken, PA 19428
Satellite office located on the 2nd Floor
Hrs of Operation: Wed. 12:30-4:30pm
Twitter: @SenatorHughes
Facebook: Senator Vincent Hughes
215-879-7777 • www.senatorhughes.com



Representative Mary Jo Daley

148th Legislative District
815 Fayette Street, Suite 200
Conshohocken, PA 19428
Office hours: 9am – 5pm, Mon. - Fri.
Office phone: 610-832-1679
Email: repmaryjodaley@pahouse.net

Montgomery County Government

One Montgomery Plaza, Suite 800
Norristown, PA 19404 610-278-3000 www.montco.org

Montgomery County Commissioners

- Valerie A. Arkoosh, MD, MPH, Chair
- Kenneth E. Lawrence, Vice Chair
- Joseph C. Gale, Commissioner

District Attorneys: Court House, 4th floor

P.O. Box 311, Norristown, PA 19404-0311, Phone: 610-278-3090

- **Treasurer** - Jason Salus, Phone: 610-278-3066
- **Register of Wills** - Bruce Hanes, Phone: 610-278-3400
- **Recorder of Deeds** - Jeanne Sorg, Phone: 610-278-3289
- **Solicitor** - Shelley Smith, Phone: 610-278-3033
- **Public Safety** - Tom Sullivan, Phone: 610-631-6500
- **Children & Youth** - Laurie O'Conner, Phone: 610-278-5800
- **Health** - Irshad A. Shaikh, Phone: 610-278-5117
- **Voter Services** - Karley Sisler, Phone: 610-278-3280
- **Veterans Affairs** - Sean Halbom, Phone: 610-278-3285

A MESSAGE FROM THE MAYOR



Dear Neighbors,

It has been a busy spring and summer, so I wanted to take this opportunity to look back at the many wonderful accomplishments we have celebrated within the Borough of Conshohocken over the past six months.

Community service has become a major theme for the Mayor's Special Events Committee, as we look to have fun and serve our neighbors whenever possible. One example of this was the first-ever Irish Week, which was a series of events leading up to the Saint Patrick's Day Parade. Irish Week ended with a post parade concert at the Conshohocken VFW that benefited the Colonial Neighborhood Council, the Conshohocken Police Association, and the Conshohocken VFW Auxiliary.

In continuation of the theme of community service, the Conshohocken Environmental Advisory Council (EAC) hosted a Neighborhood Streets Cleanup event in May that cleared 940 pounds of trash from the east-side of Conshohocken. This brought together residents and many of our local community

organizations. In June, the Mayor's Special Events Committee hosted its first-ever Conshohocken Arts Festival and Car Show, which included: Conshohocken Elementary School Art Show at 'Feine, art shows by local artists at Coyote Crossing, The Artist's Loft, and the Mary Wood Park House. The event allowed the Mayor's Special Events Committee to continue the annual tradition of hosting some of the most beautiful cars in the area right in our borough. All proceeds from the festival benefited the Conshohocken Art League, which is now in its 96th year of providing arts education!

We also saw big changes in town, including a complete overhaul of the Schuylkill River Trail by Montgomery County, which widened some trail intersections that run through the borough in an effort to make the trail more visible and safer. Restorations took place at the Riverside Dog Park, and the Conshohocken Dog Park Committee was established to help us make the borough more pet-friendly through resident input. Major renovations were also made to Mary Wood Park playground, which was completed and opened for use this past July. Finally, we celebrated Chief of Police, Michael Orler's retirement and appointed a new Acting Police Chief, George Metz.

One major goal in 2018 was to make our Mayor's Office more transparent and accessible to residents. Citizens can now reach the Mayor's office through the website, phone, email, social media, and Snapchat! Mayor office hours are also held the fourth Wednesday and third Saturday of each month for residents who wish to voice a concern or discuss information in person.

As we look forward to the upcoming fall and winter months ahead, the Borough will be filled with plenty of fun events and community-service opportunities for residents to get involved and enjoy. Below are just a few upcoming activities:


- September 11th - Suicide Awareness and Prevention Panel Discussion, *hosted by Sarah McGlinchey*
- September 22nd - Conshohocken FunFest, *hosted by the Borough of Conshohocken*
- October 13th - Beer Festival at the A Field, *hosted by the Conshohocken Plymouth Whitemarsh Rotary Club*
- October 20th - West-Side Neighborhood Street Cleanup, *hosted by the Conshohocken Environmental Advisory Council (EAC)*
- October 27th - Halloween Parade and Activities, *hosted by the Mayor's Special Events Committee*
- November 23rd - Conshohocken Christmas Tree Lighting, *hosted by AMBUCS*
- December 2nd - Conshohocken Hanukkah Menorah Lighting, *hosted by Chabad of Lafayette Hill*


Thanks for reading, I hope to see you in the neighborhood!


Yaniv Aronson, *Mayor of Conshohocken*


Speak with the Mayor


 yaronson@conshohockenpa.gov

 Yaniv Aronson

 [yanivaronson](https://www.instagram.com/yanivaronson)

 [conshymayor](https://www.snapchat.com/add/conshymayor)

 ConshohockenMayor.com

 484-532-8144

Office Hours

Held at the Community Center at the Fellowship House

4th Wednesday of Each Month: 4:30 PM to 6 PM • 3rd Saturday of Each Month: 10:00 AM to 12:00 PM

CONSHOHOCKEN FUNFEST



SATURDAY, SEPTEMBER 22, 2018

Join the Borough of Conshohocken on Saturday, September 22nd, for live music, vendors and crafters, children activities, and the showcase of local Conshy businesses all on one street! This year Conshohocken Funfest will be located on Fayette Street between 1st and 5th Avenue. The event will start at 1:00 PM and continue until 8:00 PM. A music stage for live performances will be located at 1st Avenue and Fayette Street, and local businesses and restaurants are welcome to sell directly on Fayette Street. Craft vendors will be selling handmade items from 2nd to 3rd Avenues, and an area for children entertainment will be located between 3rd and 5th Avenues on Fayette Street. At 5pm all children activities will break down, and the live music, vendors and local food and drink will stay until 8:00 PM!

Event Details

Date: September 22, 2018

Time: 1:00 PM – 8:00 PM

Location: Fayette Street (1st to 5th Avenue)

Note: 1st to 2nd Avenue only will remain open until 8:00 PM

Music Lineup:

1:00 PM – 3:00 PM: River of Dreams

3:30 PM – 5:30 PM: The Zone

6:00 PM – 8:00 PM: Radio Nashville

THE CONSHOHOCKEN ROWING CENTER



2018 Fall Programs

Fall Youth Program - FREE for Residents
Runs weekends Sept. 14 to Oct. 21, Ages 13-17
Non-residents \$825

The Conshohocken Rowing Center has numerous opportunities for both kids and adults. Continue to check the website and social media for updates and new programming.

Private Lessons and Adaptive Rowing Lessons are available from March through November.

For more information about the Conshohocken Rowing Center email rowingcrc@gmail.com or visit conshohockenrowingcenter.org

POLICE DEPARTMENT

Fall and Winter Reminders From Police Chief Metz

The arrival of autumn brings the change of leaves, chilly weather, football, back to school for youngsters, later sunrises and sunsets and anticipation for the fast approaching holidays and winter weather. Please take the time to be outdoors and enjoy the blessings of autumn and winter in our region of the country. Be safe by considering the following precautions:

- Schools reopen and our students will be active pedestrians in low light and darkness. Drive cautiously and with anticipation of pedestrians entering the roadway.
- Remove all frost and snow cover from your windows and vehicle before driving.
- Reduce your speed and increase following distances on ice and snow covered highways or consider not driving at all until roads are suitable.

Crime usually takes an upward trend as the holidays approach. Always be aware of your surroundings, keep an eye on your neighbors and please call the Conshohocken Police if you observe any suspicious behavior or circumstances. Decrease your risk of being a victim in the following ways:

- Be aware of your surroundings while out and about. Keep your phone in your pocket or purse and avoid having your head down and focused on it.
- Make arrangements for package deliveries while you are home. Package theft from porches and front steps has been a recent crime trend.
- Refrain from social media posts detailing your vacation or travel in real time. Don't announce your home is vacant.

It is the duty and the pleasure of the Conshohocken Police to serve its residents. Please contact us with your concerns and observations or stop at the Police Station for a visit. Be safe and join me in enjoying my favorite time of the year.

George Metz, *Chief of Police*



Conshohocken Police Station

400 Fayette Street, Suite 100 (1st floor)
Conshohocken, PA 19428

Office Hours:

Monday – Friday | 8:00 AM – 4:00 PM

Phone: 610-828-4032 | Fax: 610-828-5243

Emergency: 911



Lieutenant George Metz being sworn in as Acting Chief of Police.

Fees for Services

Police reports: \$.25 per page

Accident reports: \$15.00

Tow release: \$25.00 plus tow operator fee

Finger prints: \$10.00 by appointment only

Now Accepting Credit Card Payments!

The Conshohocken Police Department, Community Center at the Fellowship House and Borough Administrative Office now accept credit and debit card transactions. The goal with credit card processing is to provide residents, businesses, visitors, etc., a more convenient way to conduct business with the Borough. Please note that all transactions processed with a credit card will be charged a convenience fee of approximately 2.65% to your total cost. This fee is not collected by the Borough of Conshohocken, but instead goes directly to the credit card company.

Police Outreach Programs

THANKSGIVING DRIVE

Last Thanksgiving season, officers of the Conshohocken Police Department distributed 52 complete Thanksgiving meals to residents of Conshohocken. Each family was provided a Butterball turkey with accompanying sides. Each year the Police Department helps distribute donated meals to families in need the week leading up to Thanksgiving. To learn more about contributing to this cause or to volunteer your time, please contact 610-828-4032.



CONSHOHOCKEN POLICE DEPARTMENT TOY DRIVE

Each holiday season, the Conshohocken Police Department holds an annual toy drive to benefit the children within the Colonial School District. To inquire about submitting a donation, please contact the Conshohocken Police Department at 610-828-4032.



FIRE AND EMERGENCY SERVICES



OCTOBER IS FIRE PREVENTION MONTH

Fire Safety Facts

Each year, more than 4,500 Americans die and more than 30,000 are injured in fires. Many of those deaths and injuries could have been prevented if people had a better understanding of fire. Below are a few fire safety facts:

- **Fire is fast!** In less than 30 seconds a small flame can get completely out of control and turn into a major fire. It takes only minutes for thick black smoke to fill a house.
- **Fire is hot!** A fire's heat alone can kill. Room temperatures in a fire can be 100 degrees at floor level and rise to 600 degrees at eye level. Inhaling this super-hot air will scorch your lungs.
- **Fire is dark!** Fire starts bright, but quickly produces smoke and complete darkness. If you wake up to a fire, you may be blinded, disoriented, and unable to find your way around the home you've lived in for years.
- **Fire is deadly!** Smoke and toxic gases kill more people than flames do. Fire uses up the oxygen you need and produces smoke and poisonous gases that kill.

Practicing fire and life safety with your family at home or with your employees at your business can help minimize emergency incidents due to fire and other dangerous situations.

Conshohocken Fire Prevention Demo

October 11, 2018
Time: 7:00 PM – 9:00 PM
Location: W 4th Avenue &
Fayette Street

Smoke Detector Safety Tips

- Smoke is responsible for three out of four fire related deaths.
- Install smoke detectors on every level of your home and outside of sleeping areas. Test every detector at least once a month.
- Keep smoke detectors dust free. Replace batteries with new ones at least once a year, or sooner if the detector makes a chirping sound.
- If you have a smoke detector directly wired into your electrical system, be sure that the little signal light is blinking periodically. This tells you that the alarm is active.
- Inexpensive smoke detectors are available for the hearing impaired.

Carbon Monoxide Safety

Carbon monoxide (CO) is a by-product of combustion of fossil fuels, and is an odorless, colorless, deadly gas. At lower levels of exposure, it can cause health problems. Some people may be more vulnerable to CO poisoning such as fetuses, infants, children, senior citizens and those with heart or lung problems.

Fumes from automobiles contain high levels of CO. Appliances such as furnaces, space heaters, clothing dryers, ranges, ovens, water heaters, charcoal grills, fireplaces and wood burning stoves produce CO. Carbon monoxide is usually vented to the outside if appliances function correctly and the home is vented properly. Problems occur when furnace heat exchangers crack or vents and chimneys become blocked. Insulation sometimes can trap CO in homes.

Carbon Monoxide Emergency Prevention Tips:

- Having a working carbon monoxide detector with an audible alarm near the bedrooms can help make your home safer for you and your family. If your home has more than one story, a detector should be placed on each story. Be sure the detector has a testing laboratory label.
- Never run your car, charcoal grills or other gas powered equipment in your home or garage even if the garage door is open.
- Have your home heating equipment professionally checked and inspected every year.
- Have your kitchen cooking appliances professionally checked from time to time to ensure they are working properly too.
- Carbon Monoxide can cause the following symptoms: headaches, fatigue, nausea, dizzy spells, vomiting, confusion and irritability. Long exposures to carbon monoxide can lead to loss of consciousness and eventually brain damage or death.
- If your CO alarm sounds, do not panic. First find out if anyone in the home is feeling sick. If anyone has symptoms of CO poisoning leave the house immediately and dial 9-1-1.

Free Smoke Detectors for Borough Residents

Resident property owners living within the Borough may pick up a smoke detector at Borough Hall, located at 400 Fayette Street, Suite 200, Conshohocken, PA 19428. Our Fire Department will also deliver smoke detectors directly to resident homes. If you wish to have a smoke detector delivered, please call 610-828-1092. Supplies are limited to three smoke detectors per household.



Fire Pit Safety

In recent years, there has been a new concern for the Fire Service – fire pits. Fire pits are known to be a great source of warmth and ambiance. However, with the popularity of fire pits increasing, fire safety has become even more important. There are many things you should consider while setting up and using a fire pit.

- Keep away from flammable material and fluids such as gasoline, diesel fuel, kerosene, and charcoal lighter fluid or vehicles while in use.
- Keep it a minimum of 15 feet away from buildings.
- Do not use flammable fluids such as gasoline, alcohol, diesel fuel, kerosene, and charcoal lighter fluid to light or relight fires.
- Exercise the same precautions you would with an open fire.
- Do not allow children to use the fire pit. Keep children and pets away.
- Do not wear flammable or loose fitting clothing such as nylon.
- Do not burn trash, leaves, paper, cardboard, or plywood. Avoid using soft wood such as pine or cedar that often pops and throws sparks. Use of seasoned hardwood is suggested.
- Before starting the fire, make sure the lid will still close to extinguish the fire in case of emergency. Do not overload.
- Before you light the fire, check the wind direction.
- Keep a fire extinguisher or garden hose nearby.



Timothy Gunning, *Fire Chief*

Narberth Ambulance

Why Should You Support Narberth Ambulance?

For over 70 years Narberth Ambulance has been dedicated to keeping the communities of Lower Merion, Narberth, Haverford, Conshohocken and West Conshohocken safe. Despite our name, we are your local ambulance company.



Since we formed in 1944, our expertly trained volunteers and career staff have stood prepared to respond to any emergency within a moment's notice. We operate 365 days a year, 24 hours a day for the 95,000 residents and 7,000 businesses in our region.

It costs money to obtain this degree of service and life-saving medicine. Thanks to your membership support, in 2017 alone, our staff of 30 full time employees and over 80 volunteers responded to over 10,000 calls for help.

As a 501 (c)(3) non-profit organization, we rely on your generous donations in order to provide the highest quality pre-hospital emergency care and medical transportation to the ill and injured. We are not funded through taxpayer dollars, and less than 1 percent of our annual operating expenses are provided through grants from the municipalities we serve. That's why we need your help.

As we continue our fund drive, please consider becoming a subscriber or renewing your membership with Narberth Ambulance. Our membership is designed to assist you in controlling your healthcare costs while also supporting the efforts of our dedicated volunteers and career staff.

We hope we can count on your support as we continue to deliver the clinical excellence and state-of-the-art urgent response you trust will always be there. Thank you for your continued support.

For full details on becoming a subscriber or volunteer member, please visit www.NarberthAmbulance.org or call 610-645-7770.

THANK YOU TO THE BUSINESSES!



The Borough Council and Administration thank the businesses that appear in this newsletter and recognize each as supporters of our community. For it is with their participation that this newsletter has been published at no cost to our residents.

Conshohocken Italian Bakery



610-825-9334
79 Jones Street
Conshohocken, PA 19428
f t i p
www.conshybakery.com

COMMUNITY DEVELOPMENT

Obstacles to Fair Housing



Have you experienced discrimination in finding housing? Have you had difficulty in finding suitable and affordable housing to rent or to buy? Do you know your housing rights as a renter or homebuyer? Do you know where to report suspected housing discrimination?

The Borough of Conshohocken Community Development staff is interested in learning about any suspected discrimination in housing and any obstacles people face in securing safe, affordable housing in the Borough. If you have had difficulty finding or securing housing or believe that you have experienced discrimination, please contact the Community Development and Zoning Officer at 610-828-1092. All information will be kept confidential.

It is unlawful to discriminate in the sale, rental, leasing, financing of housing or land to be used for the construction of housing, or the provision of brokerage services because of race, color, sex, national origin, religion, being a family with children or having a disability. People in the housing market should be aware of the following signs, which may be indicators of possible discrimination:

- Housing ads that indicate a property is for mature adults, adults only, no children or that there are special sections for families with children
- Landlords that do not permit assistive animals or require additional security for such animals
- Information provided on the telephone that changes when you meet in person
- Indications that you are being directed to a specific area when housing is available in many areas
- Landlords who refuse to allow reasonable accommodations for a disability or have extra burdensome conditions for people with disabilities who need to make such accommodations
- Saying that a property has been sold or rented when signs or ads indicate otherwise

By identifying discriminatory practices and obstacles to finding suitable housing, the Borough hopes to develop plans to improve the fair housing climate in the Borough of Conshohocken and provide those who believe they have experienced discrimination with options available for remediation.



Housing Rehabilitation Program

The Borough of Conshohocken's Housing Rehabilitation Program has been in existence for over four decades. During that time the Program has assisted hundreds of Conshohocken homeowners to bring their homes into code conformance in order to enable them to live more comfortably and safely.



Roof repair, window and door replacements, electrical upgrades, sidewalk repair, as well as handicap accessibility, are some of the items the Program can provide to eligible single-family homeowners. The Program now is a four-year Deferred Loan Program, which declines by 25% each year. Program funds are received from the Pennsylvania Department of Housing and Community Development.

New Housing Rehabilitation Income Guidelines

Your income must be below the following limits and includes your salary, pension, Social Security, child support, and interest on assets:

Number of Persons in Household	
1 Person Household	\$ 48,950
2 Person Household	\$ 55,950
3 Person Household	\$ 62,950
4 Person Household	\$ 69,900
5 Person Household	\$ 75,500
6 Person Household	\$ 81,100
7 Person Household	\$ 86,700
8 Person Household	\$92,300

Other Requirements:

- You must be a Borough of Conshohocken resident.
- You must own and occupy a single-family residence.
- Your taxes and sewer fees must be current.

There are further increases in income limits based on additional family members. The Housing Rehabilitation Program provides one-time assistance only. If the program has provided services in the past, additional work on the same property is not permitted.

If you are interested in obtaining more information regarding the Housing Rehabilitation Program, you may contact Ms. Christine M. Stetler, the Borough's Zoning Officer and Community Development Coordinator at 610-828-1092, or Nancy R. Nugent, the Program's Intake Coordinator at 610-246-3979



ENGINEERING

When it Rains, It Drains!

Understanding storm water and how it can affect your money, safety, health and the environment

What is Storm Water?

Storm water is water from precipitation that flows across the ground and pavement when it rains or when snow and ice melt. The water seeps into the ground or drains into what we call storm sewers. These are the drains you see at street corners or at low points on the sides of streets. Collectively, the draining water is called storm water runoff.

Why is Storm Water “Good Rain Gone Wrong”?

Storm water becomes a problem when it picks up debris, chemicals, dirt, and other pollutants as it flows or when it causes flooding and erosion of stream banks. Storm water travels through a system of pipes and roadside ditches that make up storm sewer systems. It eventually flows directly to a lake, river, stream, wetland, or coastal water. All of the pollutants storm water carries along the way empty into our waters, too, because storm water does not get treated!

Restoring Rain’s Reputation: What Everyone Can Do To Help:

Rain by nature is important for replenishing drinking water supplies, recreation and healthy wildlife habitats. It only becomes a problem when pollutants from our activities like car maintenance, lawn care and dog walking are left on the ground for rain to wash away.

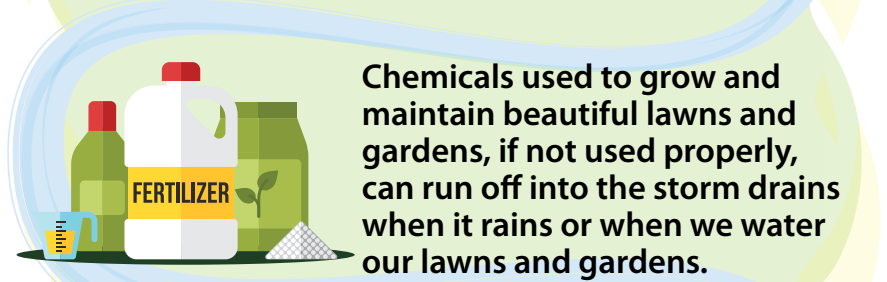
Here are some of the most important ways to prevent storm water pollution:

- Properly dispose of hazardous substances such as used oil, cleaning supplies and paint. NEVER pour them down any part of the storm sewer system, and report anyone who does!
- Use pesticides, fertilizers and herbicides properly and efficiently to prevent excess runoff.
- Look for signs of soil and other pollutants, such as debris and chemicals, leaving construction sites in storm water runoff or tracked into roads by construction vehicles. Report poorly managed construction sites that could impact storm water runoff to us.
- Install rain barrels or rain gardens on residential property, which capture storm water and keep it on site instead of letting it drain away into the storm sewer system.
- Report any discharges from storm water outfalls during times of dry weather – a sign that there could be a problem with the storm sewer system.
- Pick up after pets and dispose of their waste properly. No matter where pets make a mess – in a back yard or at the park – storm water runoff can carry pet waste from the land to the storm sewer system to a stream.
- Store materials that could pollute storm water indoors, and use containers for outdoor storage that do not rust or leak to eliminate exposure of materials to storm water.



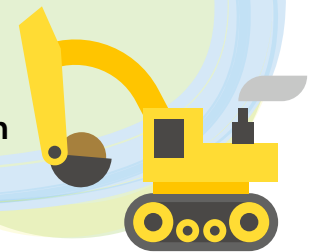
Pet waste left on the ground gets carried away by storm water, contributing harmful bacteria, parasites and viruses to our water.

Vehicles drip fluids (oil, grease, gasoline, antifreeze, brake fluids, etc.) onto paved areas where storm water runoff carries them through our storm drains and into our water.



Chemicals used to grow and maintain beautiful lawns and gardens, if not used properly, can run off into the storm drains when it rains or when we water our lawns and gardens.

Waste from chemicals and materials used in construction can wash into the storm sewer system when it rains. Soil that erodes from construction sites cause environmental degradation, including harming fish and shellfish populations that are important for recreation and our economy.



PUBLIC SERVICES DEPARTMENT

New Roll Cart Trashcans Coming to the Borough

In January 2019 the Borough will be distributing 64 gallon Toter brand trash and recycle carts to each household number. Each household, including apartment complexes that utilize Borough trash services, will receive one trash cart and one recycle cart at no charge. It will be required that the new carts are put in to use by **Monday, March 4th, 2019**. It is your responsibility to manage and care for your Borough issued carts. In the event you move, your carts should remain at the house for use by the next resident.



Please note: All households that are currently utilizing roll cart trashcans may continue to use their existing cart(s). Acceptable carts must include 2 wheels, a metal lift bar, and an attached lid. If you would like to opt out of receiving a trash and/or recycle cart because you are already utilizing one please contact Public Services at (610) 828-1092. If you have any questions regarding acceptable carts please do not hesitate to contact us.

Specific delivery details will be posted to our website prior to the rollout. Once the initial delivery of the carts is completed, additional carts will be made available for purchase for \$54.00 each. An order form will be posted on our website in January 2019.

2018/2019 Holiday Solid Waste & Recycle Collection Schedule

When a holiday falls on a Saturday or Sunday it is observed on the following Monday. When your trash and recycle collection day falls on a holiday, your trash and recyclables will be collected on your next scheduled collection day. **There will no longer be a Tuesday recycle pickup for the east side after a Monday holiday. Recycling will be picked up the following Monday.**

LABOR DAY	Monday, September 3, 2018	DAY AFTER THANKSGIVING	Thursday, November 22, 2018
COLUMBUS DAY	Monday, October 8, 2018	CHRISTMAS DAY	Friday, November 23, 2018
VETERANS DAY, OBSERVED	Monday, November 12, 2018	NEW YEAR'S DAY 2019	Tuesday, January 1, 2019
THANKSGIVING DAY	Thursday, November 22, 2018	MARTIN LUTHER KING JR. DAY	Monday, January 21, 2019

Trash Collection Rules and Regulations

- There is a limit of 4 cans/bags per household per pick-up (200 pounds maximum).
- Each can/bag is not to be heavier than 50 pounds.
- Needles, syringes, lances and other sharp objects should be placed in a metal container with a secure lid so as not to be a hazard.
- Please place your cans/bags at curbside on your property no earlier than 5:00PM the night before and your cans must be removed from curbside no later than 7:00PM the day of collection.
- No clean-outs or move-outs unless prearranged 24 hours in advance. Please call (610) 828-1092.
- No construction debris or carpet unless prearranged 24 hours in advance. Please call (610) 828-1092.
- Trash will be left curbside and 'red tagged' if deemed to be too heavy or improperly placed. Trash that is left should be returned to the property before 7:00 PM.
- Trash collection rules and regulations will be updated in 2019.

Department Staff

- Ray Sokolowski, Director of Public Services
- Allison Flounders, Administrative Assistant
- Frank Perry, Foreman
- Dan Ingram, Building Services Manager
- Mike Maxwell, Landscaping and Grounds Manager

Yard Waste Collection Rules and Regulations:

All residences must participate in the Borough's recycling programs by separating their recyclable material from their regular trash. Yard waste is recyclable, therefore the separation and collection of this material is mandated by the Commonwealth of Pennsylvania and Conshohocken Borough.

- Weeds, leaves, brush and plants should be placed in biodegradable paper composting bags. Please no trash in these bags.
- Each bag should not to be heavier than 50 pounds.
- Tree branches under five-(5") in diameter, not exceeding five-(5') in length, are to be securely tied into bundles and should not to be heavier than 50 pounds.
- Christmas trees. Please no decorations, tree stands or plastic tree bags.
- Please place your bags and or bundles at curbside on your property no earlier than 5:00 PM the night before.
- There is no limit of yard waste collected that is determined to be reasonable by the Borough.

Effective January 1st, 2019, grass clippings will no longer be accepted with yard waste collection. They should be left on your lawn to act as a natural fertilizer.

Recycling Grass Clippings

Putting Grass Clippings To Work While You Mow!

Recycling grass clippings means putting them back into your soil. This helps your lawn, helps the environment and makes mowing easier and faster.



- Grass clippings are 100% recyclable
- Grass clippings promote better growth by returning essential plant nutrients to the lawn
- Every trash bag of clippings contains as much as a quarter pound of usable organic nitrogen
- Grass clippings keep the soil cooler and help maintain soil moisture
- Grass clippings enhances topsoil development and improves soil structure
- During the summer, grass clippings can account for more than 50% of all residential trash
- Recycling grass clippings frees up valuable landfill space and reduces landfill methane gas and leachate problems.

LAWN CARE

Recycling grass clippings requires only basic lawn care:

- Mow frequently, each time cutting about ½ inch to 1 inch and never cutting the lawn shorter than 2 to 2 ½ inches in height.
- Keep mower blades sharp to avoid injuring the grass and to minimize the length of the grass clippings.
- Use mulching mower or one that discharges grass clippings evenly
- Do not over fertilize. Too much fertilizer can contaminate surface and ground water and stimulate new growth that will need mowing.
- Do not water excessively. Too much water can increase that need for more frequent moving .

Doctors make the best neighbors.

There's a new approach to health, with you at the center. No matter your healthcare needs, this office is the place for continuous, comprehensive and integrated care.



CONSHOHOCKEN FAMILY PRACTICE

612 Fayette Street, 2nd Floor
Conshohocken, PA 19428
P: 484-622-6500

Jennifer Dupre, MD

Joanna S. Kusmirek, MD

Janis W. Rubin, MD

Randi Zeitzer, MD

Call 484-622-6500 to schedule an appointment.

MULCHING

Avoid recycling grass clippings when your lawn is too tall or the conditions are too wet. Instead, use grass clippings as mulch. Mulching provides a variety of benefits:

- Clipping spreads evenly around the garden and bedding plants help control weeds.
- Mulching shades the soil surface, keeps soil temperatures low and helps to retain moisture.
- Clippings release valuable nutrients as they decompose.

If you can't use your grass clippings, find a neighbor who can. If not, your community may have a yard waste-composting program that will take your lawn clippings.

Avoid mulching with grass clippings that have been recently treated with herbicides that may harm sensitive plants. Instead, leave recently treated clippings on the lawn or place them into a compost bin, where most herbicides will break down.

BENEFITS OF RECYCLING GRASS CLIPPINGS

- Mowing time can be reduced 50% by eliminating the bagging and disposal of clippings.
- You won't need to purchase expensive trash bags.
- Recycling grass clippings saves time and money spent on commercial fertilizers.
- You'll eliminate physical injuries caused by bagging, lifting and carrying grass clippings.

COMPOSTING YARD WASTE

Composting grass clippings and leaves is another time and money saving option for recycling yard waste.

Conshohocken is Single Stream Recycling

Conshohocken's Single Stream Recycling process allows all of your recyclable materials to be placed into one recycling container. The best part is you don't have to separate them. Hence we get the term 'Single Stream Recycling'.

Residents will see trash trucks collecting recyclables. Rest assured the recycled materials are going to the recycling facility, NOT the trash-to-steam plant. Make sure your recycling container is left out before 7am on collection day, at the front edge of your property or nominated collection point.



YES

Please Recycle These Items

- Newspapers, inserts & junk mail
- Magazines, catalogs & envelopes
- Paperback books & phonebooks
- Cardboard & clean pizza boxes
- Office & school paper (colored paper too)
- Boxboard (cereal, cake & cracker boxes)
- Paper egg cartons
- Paper bags (grocery type)
- Aluminum cans & clean foil
- Tin & steel aerosol cans (empty)
- Empty glass jars & bottles
- All plastic containers labeled

Please remember all containers should be empty and clean. Please remove all lids from plastic containers. Recycling Stickers are also available for any additional container that you may wish to designate for recycling.

Public Services Department
610 East Elm Street, Conshohocken, PA 19428
610-828-1092



NO

Do NOT Recycle These Items

- No garbage
- No loose plastic bags
- No food waste
- No food tainted items (used paper plates, paper towels or paper napkins)
- No polystyrene cups or plates
- No motor oil bottles
- No hazardous chemical containers
- No plastic toys or sporting goods
- No electronics or batteries
- No compact discs or DVDs
- No foam egg cartons
- No ice cream cartons
- No light bulbs
- No hangers
- No yard waste or garden tools

For more information regarding proper disposal of household hazardous waste visit:
<https://www.montcopa.org/637/Recycling-Information>

Fall Leaf Collection

Every year the Public Services Department collects leaves beginning in October and ending in December. The schedule will be posted on the Borough's website.

Fall Leaf Collection Rules and Regulations:

- Leaf piles may extend along the length of your entire property. Please rake your piles to the curb but not into the street.
- Please do not mix limbs, brush, and other debris in the leaf piles. This may result in damage to equipment and injuries to employees.
- Adverse weather conditions may cause delays on posted leaf collection dates.
- Once the leaf collecting machine passes it will NOT return.
- Leaves will not be collected in the trash. Trash with leaves commingled will not be collected.
- Motorists should obey the posted 'no parking' signs and be cautious on all roads during leaf collection season.



Snow Removal

When it snows it is the Public Services Department's goal to have all borough and state roads cleared within 6 to 10 hours after the snow has stopped falling. If you have off street parking please refrain from parking on the street. This will help our crews do a better job. Clear your sidewalks after plowing has been completed. A 3-foot wide path of sidewalk must be cleared on your property within 24 hours after the snow has stopped. Don't forget your crosswalks, handicapped ramps, and alley crossing.

It is illegal to shovel, throw or plow snow from sidewalks onto street parking, driveways and allies, into the street or right-of way. Dumping snow or ice on Borough property, or plowing snow across a street is also prohibited.

When the Mayor has declared a snow emergency, remember to remove your vehicle from any posted "Snow Emergency Route." Your vehicles must be removed until after the parking lanes have been completely cleared.



Christmas Tree Recycling

Conshohocken Borough will start recycling Christmas trees on Wednesday, December 26, 2018.

Residents are asked to put their used Christmas trees out on Tuesday before the Wednesday yard waste pick-up. Residents must remove tree bags, all ornaments, lights and stands. The trees are collected, chipped and composted. The Borough thanks you for your cooperation.

Great docs, down the block.

With our practice located in Conshohocken, receiving quality and compassionate care for your child has never been more convenient.



TRAPPE PEDIATRIC CARE AT CONSHOHOCKEN

612 Fayette Street, 2nd Floor
Conshohocken, PA 19428
P: 484-622-6340

Asim Warsi, M.D.

Convenient office hours; evening and weekend appointments available



Call 484-622-6340 to schedule an appointment.

LICENSES & INSPECTIONS

The Licenses & Inspections Department personnel work diligently to preserve and protect the health, safety and welfare of the public throughout all facets of property ownership, residency, development, construction and business operation within Conshohocken Borough. The Department's staff is responsible to promote proactive property maintenance and regulate business activities through the issuance of permits, licenses and certificates, and conducting appropriate inspections to ensure compliance with applicable ordinances and codes adopted by the Borough. Ray Sokolowski serves as the Director for the Licenses & Inspections Department.

Frequently Asked Questions

Do I need a permit for.....?

Any work beyond a basic repair or a non-structural alteration may require a building permit issued by the Borough's Building Code Official for both residential and commercial properties. The best course of action is to contact the Borough office at (610) 828-1092, and ask a building inspector if a permit is required for your project. Be prepared to provide a detailed scope of work for the project, and identify the property as residential or commercial. Change in use may require zoning approval.

Am I responsible for maintaining the alley behind my house?

Yes. Typically, the property owners on each side of an alley are responsible to maintain to the center of the alley for the width of each respective property. This includes the alley pavement surface (e.g. potholes), as well as grass, weeds, trash, etc., that may be found in an alley, regardless of how it ended up there. Weeds on the other side of your fence along the alley are still part of your property, and therefore your responsibility to trim and/or spray. The Borough does not plow snow in alleys.

Why does the Borough need to inspect the home I'm selling?

Borough Ordinance Chapter 11, Part 1 governs Transfer of Real Estate and Real Estate Certification. Anyone selling a property in the Borough is responsible to certify, according to §11-111, that there are no uncorrected violations of any housing, building, zoning, safety or fire codes. The Borough performs an inspection based on a Real Estate Certification Checklist (<http://www.conshohockenpa.gov/media/24006/Real-Estate-Checklist-52617.pdf>) adopted by Borough Council and records any apparent violations. All violations are required to be corrected prior to settlement, or the responsibility to correct said violations may be transferred to the buyer, who will have 12 months to complete the work. The terms of such a transfer are private and fall outside of the Borough's authority.

Where exactly is my property line?

Absent physically apparent monuments or property corner pins, the Borough cannot independently verify property lines on behalf of private property owners. Property owners are encouraged to engage a Professional Land Surveyor to prepare a site plan and physically set corner markers. This information is useful for locating potential property improvements such as fences and garages, laying out additions to the primary structure, and to satisfy property line disputes, if necessary. Plans for newer homes may be available at the Borough office. File a Right-to-Know Request, and the Borough staff will search the archives.

How do I register a new rental property?

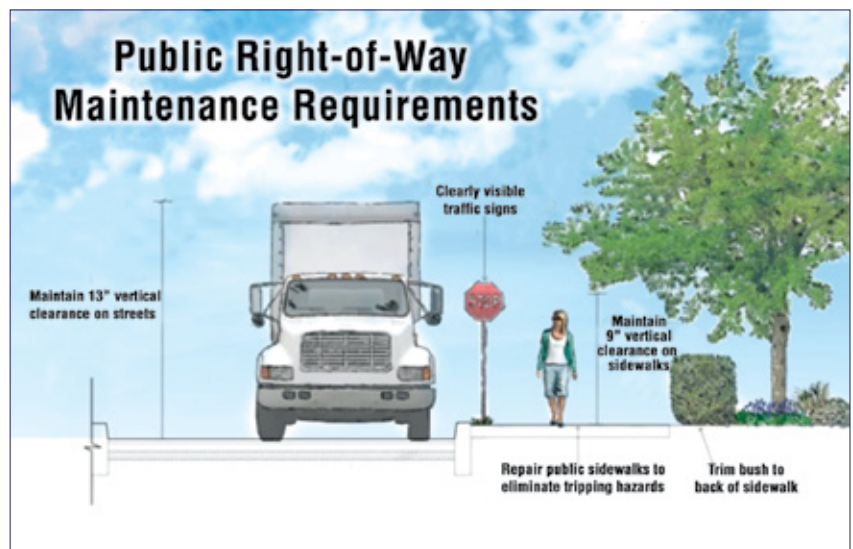
Borough Ordinance Chapter 11, Part 2 governs Residential Rental License Permits. Visit the Borough website (www.conshohockenpa.gov), and download the Rental Packet for New Rentals from the "Forms" list under the Permits & Licenses section (<http://www.conshohockenpa.gov/media/3294/Rental-Packet-New-Rental-.pdf>).

Property Maintenance & Safety

As a property owner, you are responsible for mowing, trimming and spraying, as necessary to keep your property, as well as the public street frontage, clean and safe. The illustration to the right highlights some of the requirements for private maintenance of public rights-of-way. For more information related to services provided by the Borough of Conshohocken Department of Public Services please visit our website at <http://www.conshohockenpa.gov>.

Department Staff

- Ray Sokolowski, Director of Public Services, Licenses & Inspections & Building Code Official
- Christopher Small, Code Enforcement Officer & Residential Building Inspector
- Kristen Davis, Code Enforcement Officer & Rental Property Inspector
- Michelle Summers, Administrative Assistant, Licenses and Inspections
- John Robitaille, Commercial Building Inspector (3rd party)



DEPARTMENT OF RECREATION SERVICES

Live, Work & Play! *Creating Community Through People,
Parks and Programming!*

Welcome to the Department of Recreation Services. Our Department's mission is to "enhance the quality of life for all residents through physical, mental, cultural, social and environmental development."

As we evolve forward while embracing history, we invite you to provide input so we can ensure that our programming and recreational facilities meet the needs of our community. Our staff is stationed at the Community Center at the Fel and is ready to assist you in any way possible! Feel free to stop in, call 610-828-3266 or email RecServices@conshohockenpa.org. For all Department information, please visit the Recreation Services page of the Borough website at www.conshohockenpa.gov.

DISCOUNT TICKET PROGRAM

The Recreation Services Department in conjunction with Pennsylvania Parks & Recreation Society (PRPS) will be selling discount ski tickets for the winter season (mid-December to early March). Tickets will include Blue Mountain, Big Boulder/Jack Frost, Bear Creek etc. Limited amusement park tickets will be sold until December. Call today to check on availability!

GROUP FITNESS CLASSES – COMING FALL 2018!

Conshohocken Community Center at the Fel will now be offering its own fitness classes that include Zumba, H.I.I.T, Pilates, etc. More information will be available in the Recreation Services Activity Guide in August! You can sign up for classes on conshohockenrsp.recdesk.com or call 610-828-3266 for the fall schedule.

Daily, Monthly and Annual Memberships – SIGN UP NOW! Purchase or renew a Community Center at the Fel membership today! For membership prices, visit www.conshohockenpa.gov or contact us directly at 610-828-3266.

Recreational Facilities

Looking for a location for your next event? Check out our facilities available for rent. For a complete fee schedule and list of available buildings, parks and amenities please visit us at www.conshohockenpa.gov

- The Community Center at the Fellowship House
- Mary Wood Park
- Sutcliffe Park
- Aubrey Collins Park
- 2nd Avenue Meadows
- A-Field
- B-Field

Department Staff

- Lauren Irizarry, Director of Recreation Services
- Madison Orler, Administrative Assistant



Riverside Dog Park

- Available for use for members only, 7 days a week.
- Located at 227 Washington St. along the Schuylkill River behind the Londonbury Apartments.
- Features a small dog area and large dog-fenced area.
- Registration for memberships will be taken at the Conshohocken Community Center at the Fel or you can register online at www.conshohockenrsp.recdesk.com/Community/Membership. You will need a completed registration form with waiver along with your dog's license and a copy of your dog's Rabies vaccination. Payments can be made by check, cash, or credit card. Once all necessary forms and documents are received you will be issued an access code.



Birthday Parties

Hold your next birthday party at the Conshohocken Community Center at the Fel! Book your party now or check out available birthday party packages. Space is limited so call today! For rental fees and polices contact 610-828-3266 or email morler@conshohockenpa.gov

Special Events

Make sure you mark your calendar for these Recreation Services special events!

- **Halloween Pumpkin Painting** - October 27, 2018 | 12pm-2pm
- **Thanksgiving Senior Luncheon** - November 14, 2018 | 12pm-2pm
- **Winter Wonderland** - December 15, 2018 | 11am-1pm
- **Holiday Senior Luncheon** - December 12, 2018 | 12pm-2pm
- **George Snear Women's Holiday Basketball Tournament** - December 27-28, 2018 | 6pm-9pm

AMERICAN RED CROSS BLOOD DRIVE

- Sunday, September 23, 2018 | 9am-2pm
- Help save a life by donating blood!

Senior Programs



- **ST. MARY'S GOLDEN AGE BINGO AT THE COMMUNITY CENTER AT THE FEL** ~ Mondays mornings, Session 1 begins Monday, September 10, 2018
- **SENIOR AEROBICS** ~ Monday, Wednesday and Friday mornings at the Community Center at the Fel. Times vary. For a complete schedule please call 610-828-3266.
- **SILVER SNEAKERS & PRIME MEMBERSHIPS** ~ The Community Center at the Fel is a participating member of Silver Sneakers and Prime. Take advantage of this great opportunity and sign up today!
- **SENIOR CARD GAMES** – Open Card Games
 - Fridays | 9:30am-11:30am
 - Members: Free | Non-Members: \$5

Adult Programs

CORPORATE LUNCH TIME BASKETBALL

- Tuesdays & Thursdays | 12pm -2pm | 18+
- Members: Free | Non-Members: \$5

SUNDAY MORNING BASKETBALL

- Sundays | 9am – 11am
- Members: Free | Non-Members: \$5

FALL/ WINTER MEN'S BASKETBALL LEAGUE

- October 15, 2018 – February 11, 2019
- League Fee \$325.00 | Men 21+
- Registration deadline: September 17, 2018
- 12 Team League
- 11 games guaranteed (all teams make PLAYOFFS)
- \$35/team referee fee is paid to referees before the start of the game
- Days and Times of game TBA
- All teams that were enrolled in the 2017 Fall/Winter League will have first choice to register until August 28, 2018.
- For more information, contact Tom Brady at 610-828-3266 or tbrady@conshohockenpa.gov.



PICKLEBALL

- Mondays, Wednesdays, Fridays, 10am-12pm
- Saturdays & Sundays: Call for availability
- Members: Free | Non-Members: \$5



OPEN GYM

The Community Center has open gym times based off the daily schedule. Contact the Community Center at the Fel at 610-828-3266 for the daily schedule, or view the calendar online at <https://conshohockenrsp.recdesk.com/Community/Calendar>.

CONSHY SPORTS LEAGUE

Conshy Sports League (CSL) offers a variety of programs for adults. It's a great way to meet new people and network, all while playing sports right here in Conshohocken. For more information, visit www.conshyleagues.com.

Youth Programs

BEFORE AND AFTER SCHOOL CARE WITH A CHILD'S PLACE



- The Borough of Conshohocken is a partner of A Child's Place Extended Care, Inc., which provides Before and After School Care at the Community Center at the Fel.
- Half-Day Care and Day-Off Programs are also offered!
- Visit www.acpec.com for additional information or contact Danielle at 610-304-8769.

THE ACADEMY OF HOOPS

- Take all of the guesswork out of your basketball training and make it count by attending The Academy of Hoops workout sessions.
- Learn from the best, Alvin Williams, 8 year NBA player and Villanova University Hall of Famer.
- Visit www.theacademyofhoops.com to register for skill specific training, biddy bop workouts and private instruction at the Community Center at the Fel
- Dates and times TBA



Parent & Child Programs

STROLLER STRIDES – Classes coming Fall 2018. Check the Recreation Services Activity Guide for more information.

PARENT & ME OPEN PLAY

- Wednesdays & Fridays beginning 9/5
- Ages 2-4
- 10am-11:30am
- Brand new equipment and mats
- Members: Free | Non-Members: \$5



Youth Programs– Fall & Winter 2018-2019

Below is a list of Fall and Winter 2018-2019 programs. For full program details including location, price, time, age group and min/max enrollment, please visit us at www.conshohockenpa.gov. Our friendly front desk staff is also happy to assist you with registration or any questions pertaining to our facilities and programs.

Program	Dates		
American Red Cross Babysitting (Ages 11-15)	Session 1: 9/22		
Kid's Yoga (4-9 Year Olds)	Session 1: 9/16 – 10/21	Session 2: 11/4 – 12/9	Session 3: 1/13 – 2/17
Mad Science Workshops (6-12)	Session 1: 9/29	Session 2: 10/13	Session 3: 11/17
Theatre Horizon – Drama Club (Ages 7-12)	Session 1: 9/20 – 10/25	Session 2: 11/8 – 12/20	Session 3: 1/10 – 2/14
Sew Young Club (Ages 8-13)	Session 1: 9/17 – 10/22	Session 2: 11/5 – 12/10	Session 3: 1/14 – 2/18
Soccer Shots (Ages 2-6)	Session 1: 9/15 – 11/3	Session 2: 2/2 – 3/9	
Soccer Shots (Ages 2-6)	Session 1: 9/17 – 11/5	Session 2: 2/4 – 3/11	
Young Rembrandts Drawing (Ages 4-6)	Session 1: 9/8 – 10/6	Session 2: 10/14 -11/11	Session 3: 11/18 - 12/16
Young Rembrandts Drawing (Ages 7-14)	Session 1: 9/9 - 10/7	Session 2: 10/14 -11/11	Session 3: 11/18 - 12/16
Young Rembrandts Cartooning (Ages 8-14)	Session 1: 9/9 - 10/7	Session 2: 10/14 -11/11	Session 3: 11/18 - 12/16
Obvious Choice Sports – Schools Day off Programs:	9/10, 9/19, 11/6, 12/31		
Obvious Choice Sports – Winter Break Camp:	12/26 – 12/28		
Obvious Choice Sports – Basketball (Ages 7-12)	Session 1: 9/15– 10/20		
Obvious Choice Sports – Basketball (Ages 3-4)	Session 1: 11/3 – 12/15		

Note: Programs will only run if the minimum enrollment figure is satisfied. **Register today so that these fun and exciting programs are not canceled.** Cancellations will occur one week prior to the schedule start date if applicable. A full refund will only be given when the Borough of Conshohocken cancels a program. A refund request made at least five (5) business days prior to the program beginning, will receive a refund less 5%. No refunds will otherwise be given. Refunds may take up to thirty (30) business days to process. Cash, credit, check or money orders are accepted. Register online or in-person and pay at the Community Center at the Fel! There will be a 2.65% charge on all credit card transactions. Dates may be subject to change.

EDWARDS-FREEMAN NUT COMPANY

The Best Nut & Candy Store On Earth

AMAZING VARIETY OF:

- CHOCOLATE
- DRIED FRUITS
- SPICES
- ASHER'S CHOCOLATE
- SUGAR FREE CANDY
- LACCAS COFFEE
- LACOLOMBE COFFEE
- CONFECTIONERS SUPPLIES
- MELTING CHOCOLATES
- CANDY BAR CANDY
- WEDDING CANDY
- CORPORATE ACCOUNTS
- PARTY CANDY
- SPECIAL HANDMADE CHOCOLATES
- HANDMADE DOG TREATS & BONES



**NUT
BUTTERS**

**Factory
Tours**

HOURS DAILY 9-5
SATURDAY 9-4 • SUNDAY 10-3
Call for extended holiday hours

610-828-7441

**441 EAST HECTOR STREET
CONSHOHOCKEN PA 19428**

EDWARDSFREEMAN.COM



We ARE Your Craft Beer Destination

NOW OPEN
the Below Deck Bottle Shop!
Come explore our selection of
350+ bottles and cans. Mix and match
your way to craft beer excellency.
www.belowdeckbottle.com
Upstairs at the **Boathouse** enjoy our
famous wings and clam chowder.



113 Fayette Street
Conshohocken, PA 19428
610-828-2628
www.flanboathouse.com





The latest fashion for car shopping.

Shop 1500 New & Used Cars
at home in pajamas at:

FordOfConshohocken.com

JOHN KENNEDY
CONSHOHOCKEN
Enjoy Your Ride®



1403 Ridge Pike
Conshohocken, PA
610-279-1700
Norristown Exit of Blue Route

EVERY MOMENT. MORE ALIVE.
THE TURBOCHARGED
2018 MAZDA6



JOHN KENNEDY
CONSHOHOCKEN
Enjoy Your Ride®

John Kennedy Mazda
1403 Ridge Pike
Conshohocken, PA
610-279-1700

  **MazdaOfConshohocken.com**



16 East 1st Ave • Conshohocken, PA 19428
610-941-4652

Always a great time • Always a great meal

Lunch • Dinner • Bar • Corporate Meeting Space • Banquet Room

VOTED BEST

NEW AMERICAN RESTAURANT

HAPPY HOUR

BURGER

WEDDING WIRE COUPLES CHOICE AWARD

WWW.THELUCKYDOGGASTROPUB.COM



Freedom Pathology
PARTNERS
Practical Partnerships. Powerful Possibilities.



524 East Elm Street, Suite A • Conshohocken, PA 19428
855.941.PATH • freedompathology.com

CONSHOHOCKEN

PARTY SUPPLY & EVENT SERVICES

Rentals: tables, chairs & linens

Balloons: to order & custom inflates

Seasonal Patterns & Decorations,

Disposable Tableware & Cutlery,

Greeting Cards, Milestones, Favors,

Gift Bags, and More...

Oh, and **YES, WE DELIVER!**

318 Fayette St
Conshohocken PA, 19428

(610) 825-3545

info@conshyparty.com

www.conshyparty.com

William L. Ciavarelli, FD
Supervisor
William E. Ciavarelli, FD

Christopher J. Ciavarelli, FD
Supervisor
Andrea M. Ciavarelli, FD



Providing the most meaningful and personalized funeral at an affordable cost.
www.ciavarellifuneralhomes.com

951 E. Butler Pike Ambler, PA 215-646-1155
516 Fayette St. Conshohocken, PA 610-828-1336

Private On-Site Crematory. Adding Value & Peace Of Mind.

TRI-STATE FINANCIAL GROUP, LLC

(610) 270-9520

www.tfgtax.com

Serving State and Local Government

WE ADD VALUE

- Provides for the efficient collection of Act 511 Taxes
- Offers the latest in tax administration technology
- Offers a full array of delinquent collection services
- Apply the highest level of care, integrity and professionalism
- TFG services are an essential component to municipal revenue collection efforts



RUDOLPH CLARKE, LLC
ATTORNEYS AT LAW

Offices in Montgomery, Bucks, Chester and Delaware Counties

mail@rudolphclarke.com

215.633.1890

www.rudolphclarke.com

BOROUGH OF CONSHOHOCKEN
400 Fayette Street
Suite 200
Conshohocken, Pennsylvania

PRST STD
U.S. POSTAGE
PAID
HARRISBURG, PA
PERMIT NO. 609

hometownpress

This Community Newsletter is produced for
the Borough of Conshohocken by
Hometown Press • 215.257.1500

All rights reserved®

To Place An Ad Call Peggy Kucipak Albee at Hometown Press • 215-262-3617



A TRADITION OF LEGAL EXCELLENCE



Eastburn and Gray, PC
Attorneys at Law

With law offices in Blue Bell, Montgomery County and Doylestown, Bucks County, our experienced attorneys provide high quality legal services throughout Pennsylvania and New Jersey in areas including:

- Banking
- Bankruptcy
- Business and Corporate Law
- Construction Law
- Education and School Law
- Employment and Discrimination
- Family Law
- Land Use and Zoning
- Litigation
- Municipal Law
- Real Estate
- Tax Assessment Appeals
- Taxation
- Wills Trusts and Estates

To learn more about our firm, our work and our attorneys, please visit our website.

Michael E. Peters, Esq.
(215) 345-7000 ■ mpeters@eastburngray.com
www.eastburngray.com